

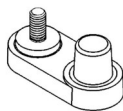
# GC15DT

## SPECIFICATIONS

Nominal Voltage (V)	6V
Capacity at C/100	258 Ah
Capacity at C/20	230 Ah
Weight	63 lbs. (28.6 kg)
Container/Cover	Polypropylene
Operating Temperature Range	-22°F (-30°C) - 122°F (50°C)

For Charging Parameters please refer to  
[www.mkbattery.com](http://www.mkbattery.com)  
Click on Technical Data, then on Photovoltaic Charging  
Parameters in the PV/Solar section

Vent	Individual quarter—turn bayonet vent cap
Self Discharge	1% per week
Terminal	U (SAE/STUD)



Made in the U.S.A. by East Penn Manufacturing Co., Inc.

Distributed by:

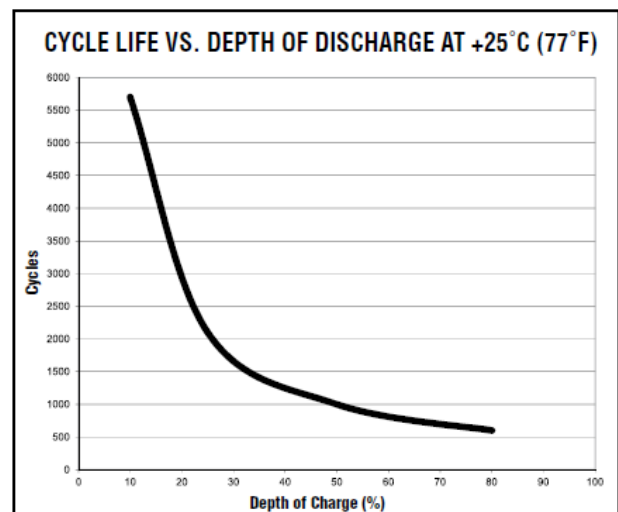
## Flooded Battery, Wet type



## DIMENSIONS

*Inches (mm)*

Length	10.25 (260 mm)
Width	7.09 (180 mm)
Height	10.85 (276 mm)



**MK Battery**

1631 South Sinclair Street • Anaheim, California 92806

Toll Free: 800-372-9253 • Fax: 714-937-0818 • E-mail: [sales@mkbattery.com](mailto:sales@mkbattery.com)

